

QUALITY

Winnebago RVs are designed and built around you, with superior craftsmanship, advanced manufacturing technologies and steel-focused construction to enhance safety and reliability.

INNOVATION

From groundbreaking RVs to game-changing features to the spacious floorplans made possible by our SmartSpace™ design, our heritage is unrivaled for continuous industry firsts in vehicle technology and design.

SERVICE

Our carefully chosen dealers are supported by factory training and our advanced parts supply system, while owners benefit from excellent real-world customer support as well as 24/7 access to online technical information.

WINNEBAGO



WINNEBAGO

REVEL



Treat roads more like suggestions.

When the going gets tough, the tough turn to the Winnebago® Revel,™ the most capable camper van we've ever built.

Off-road and off-grid ready, the fully-equipped Revel is the ideal launch pad for outdoor adventures of all kinds.

- » 4WD Mercedes-Benz® Sprinter chassis
- » LiFePO4 Energy system / Second alternator / Solar
- » Power Lift platform bed & gear garage
- » User-configurable storage
- » Hydronic heating system that runs off chassis fuel

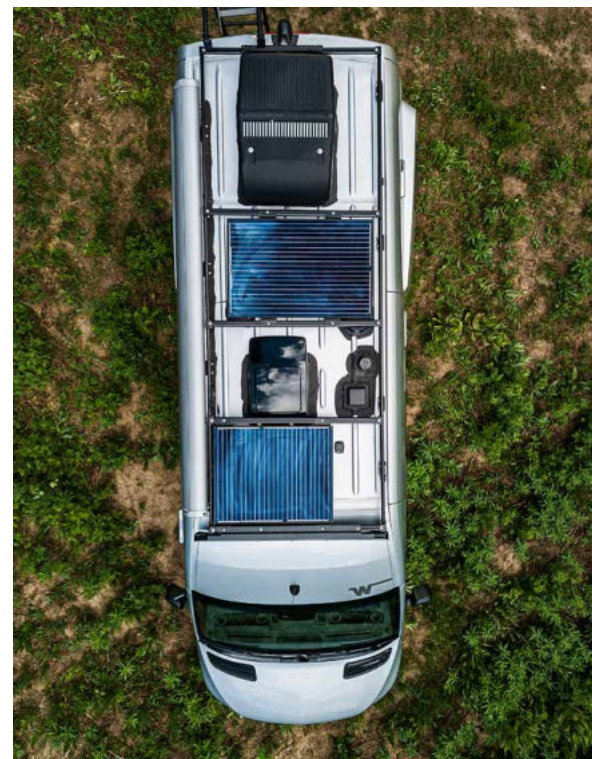


Engineered
to help you
get out. And
stay out.



Performance wheels and all-terrain tires

Augment the Revel's off-road capability with optional performance wheels from Method Race Technology featuring Bead Grip Technology and BF Goodrich® T/A® KO2 all-terrain tires.



Power To Go

To keep the 320-amp-hour lithium-ion battery charged while off-grid, the Revel comes standard with two solar panels. The battery is also charged while driving using a second, dedicated alternator or via plugging in to shorepower.



Galley access with exterior table

A new take on dining out. The Revel galley offers easier access from outside the van, with a fold-down exterior table and a portable induction cooktop that can be used indoors or out.



(Keep the) Chill Out

In addition to its extensive insulation, the Revel features a diesel-powered hydronic heating system designed to provide heating and hot water in even the most adverse climates. A quiet, efficient Bluetooth® controlled air conditioner is also available.



Superior safety and convenience features

Driving aids include adaptive cruise control, blind-spot monitoring, lane-keeping and active brake assist, plus a MBUX® touchscreen multimedia infotainment center with navigation, voice control and rear camera.



Superbly equipped for adventures that begin where the pavement ends.

With 188 horsepower, on-demand 4WD with Hi/Lo range, electronic stability and traction control, the Revel can take you almost anywhere — and back again.





Functional meets comfortable.

Flexible galley

The galley adapts to your needs, with a removable counter extension, adjustable exterior table and easy access to the refrigerator from inside or outside the coach.

Swivel cab seats & pedestal table

Swivel the cab seats around for an instant lounge, then deploy the pedestal table and voila! — an instant dining room or workspace.

Wet bath/Gear closet

The bath features a swiveling cassette toilet, flexible showerhead and powered roof vent. Adjustable shelves and a removable clothes rod make it ideal for storage or drying wet gear.

Power Lift bed

The large (49" x 79") Power Lift bed can be raised or lowered to your desired position with the push of a button, letting you customize the garage space to suit your needs.

Gear garage

The massive below-bed gear garage includes 6 removable tie-down anchors for securing gear, plus molded pockets, zippered storage and a cargo cubby with RAM® Tough-Track™ mounts.

Screen doors

The side screen door with magnetic closure offers easy access, while the rear screen has a blackout panel for privacy — and sleeping late.



44E

Dotted lines denote overhead storage area.
Floorplans are representations only and are subject to change.
Please contact a certified Winnebago dealer for more information.



WINNEBAGO

REVEL / Specifications

WEIGHTS & MEASURES	44E
Length	19'7"
Exterior Height ¹	10'
Exterior Width	7'1"
Awning Length	9'6"
Interior Height	6'3"
Interior Width	5'8"
Freshwater Tank Capacity ² (gal.)	21
Water Heater Capacity (gal.)	Continuous
Holding Tank Capacity - Gray ² (gal.)	21
Fuel Capacity (gal.)	24.5
GCWR ³ (lbs.)	13,930
GVWR (lbs.)	9,050
GAWR - Front (lbs.)	4,409
GAWR - Rear (lbs.)	5,359
Wheelbase	144"
Cassette Toilet Capacity ² (gal.)	5
Sleeps	2

- 12-volt powerpoints
- Sunvisors
- Folding privacy screens for cab door windows
- Appliqué package
- Keyless entry w/remote
- Entry door assist handle w/ RAM® Tough-Track™ mounts
- Rain sensor w/integrated wet wiper system
- High beam assist
- Active brake assist
- Dash charging station
- Active lane keeping assist
- Blind spot assist
- Traffic sign assist

Interior

- LED ceiling lights w/dimmer switch
- Tinted dual-pane euro acrylic windows w/cassette shades
- Deluxe powered ventilator fan w/rain cover
- Systems monitor panel
- USB charging points
- RAM® Tough-Track™ mounts throughout
- Heavy-duty vinyl flooring throughout

OPTIONAL EQUIPMENT

- Front cab air mattress 30" x 65" w/support base, cordless pump, repair kit and storage bag

Galley

- Removable counter extension
- Laminate countertop
- Portable single burner induction range top
- 3.0 cu. ft. 12V compressor driven refrigerator/freezer
- Stainless steel sink w/single control faucet
- Pantry

- Removable, pedestal table
- Full-extension drawers

Bath

- Flexible showerhead
- Shower curtain
- Shower w/wall surround
- Wet bath 31" x 26"
- 2 removable shelves convert to wet storage cabinet
- Removable clothes rod
- Swiveling cassette toilet
- Powered roof vent

Bedroom

- Power lift bed w/molded pockets and zip storage below
- Under-bed gear garage storage w/six removable cargo tie-down anchors
- Powered roof vent (NA w/air conditioner)
- Reading lights

Exterior

- Side screen door w/magnetic closure system
- Rear screen door w/blackout panel
- Powered patio awning w/LED lighting and Bluetooth® control
- Porch light w/interior switch
- Running boards w/ground effect lighting and rubber trim
- Rear mud guards
- Movable ladder
- Luggage rack
- Fold-down exterior table

Heating & Cooling System

Hydronic Heating System w/LED touchscreen panel

OPTIONAL EQUIPMENT

- Coleman®-Mach® 10 NDQ air conditioner w/directional vents, Bluetooth® control and built-in thermostat

Electrical System

- AC/DC load center/converter
- (1) 320-amp-hour lithium-ion battery w/dedicated second alternator to charge system
- Coach battery disconnect system
- Dual-battery charge system
- 30-amp. power cord
- Solar panel/battery charger
- 2,000-watt inverter/charger
- Roof port wiring access

Plumbing System

- Water center control panel includes all control valves, connection points and exterior wash station w/pump switch
- Winterization Package w/valve and siphon tube
- On-demand water pump
- Galley drain pump
- Heated gray water holding tank
- Potable water tank

Safety

- Smoke and carbon monoxide detector
- Fire extinguisher
- Ground fault interrupter
- High-mount brake lamp
- Daytime running lamps

Warranty⁴

12-month/24,000-mile basic warranty⁵

FOOTNOTES

- The height of each model is measured to the top of the tallest standard feature and is based on the curb weight of a typically equipped unit. The actual height of your vehicle may vary by several inches depending on chassis or equipment variations. Please contact your dealer for further information.
- Capacities are based on measurements prior to tank installation. Slight capacity variations can result due to installation applications.
- Actual towing capacity is dependent upon your particular loading and towing circumstances, which includes the GVWR, GAWR and GCWR as well as adequate trailer brakes. Please refer to the Operator's Manual of your vehicle for further towing information.
- See separate chassis warranty.
- See your dealer for complete warranty information. NA Not Available

Not all items available in combination. See dealer for details.

Because features, specifications, equipment, and options may vary from those highlighted in this brochure, the buyer is responsible for confirming with the dealer the features, specifications, equipment, and options included on their specific vehicle. In addition, Winnebago's program of continuous product improvement may result in changes to vehicle specifications, equipment, model availability, and price without notice.

Winnebago recommends following the winter use guidelines and winterization procedures outlined in your owner's manual whenever camping in freezing conditions.

EXTERIORS



BLUE GREY



BLUE GREY WITH GRAPHICS



BLUE GREY WITH RAPTOR®



PEBBLE GREY



PEBBLE GREY WITH GRAPHICS



PEBBLE GREY WITH RAPTOR®



SELENITE



SELENITE WITH GRAPHICS



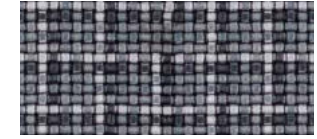
SELENITE WITH RAPTOR®

DECOR

INTREPID



Ultraleather



Bed Cover



Wall Material



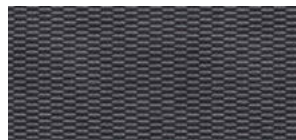
Cabinets - Silver Springs



Accent Fabric



Vinyl Flooring



Countertop



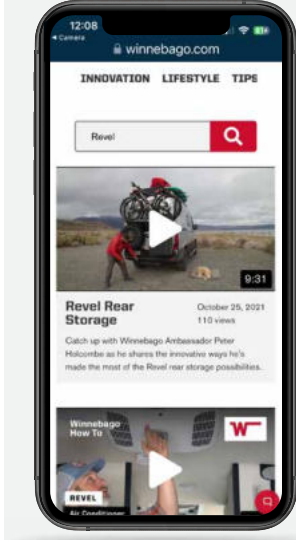
Cabinets - Pewter

What do you need to know before you go?

And how does that cassette toilet work again?

You'll find the answers to these and many more questions in the Revel Video Library, a collection of informative and how-to videos that explains pretty much everything you need to know about the Revel.

From adjusting seats and lowering (or raising) the bed, to operating major systems, to plumbing and electrical basics — it's all here in the Revel Video Library.



Revel Video Library



Scan the QR code with your smartphone camera to access the Video Library and learn more about the Revel.

LaMesa RV

LaMesaRV.com
800-496-8778